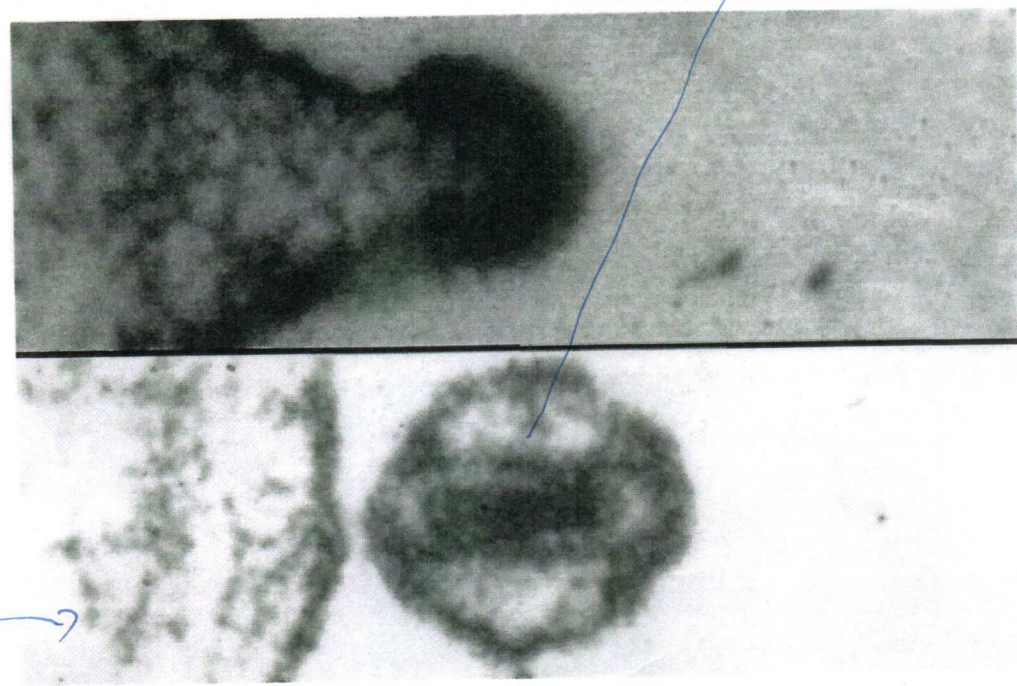


lap

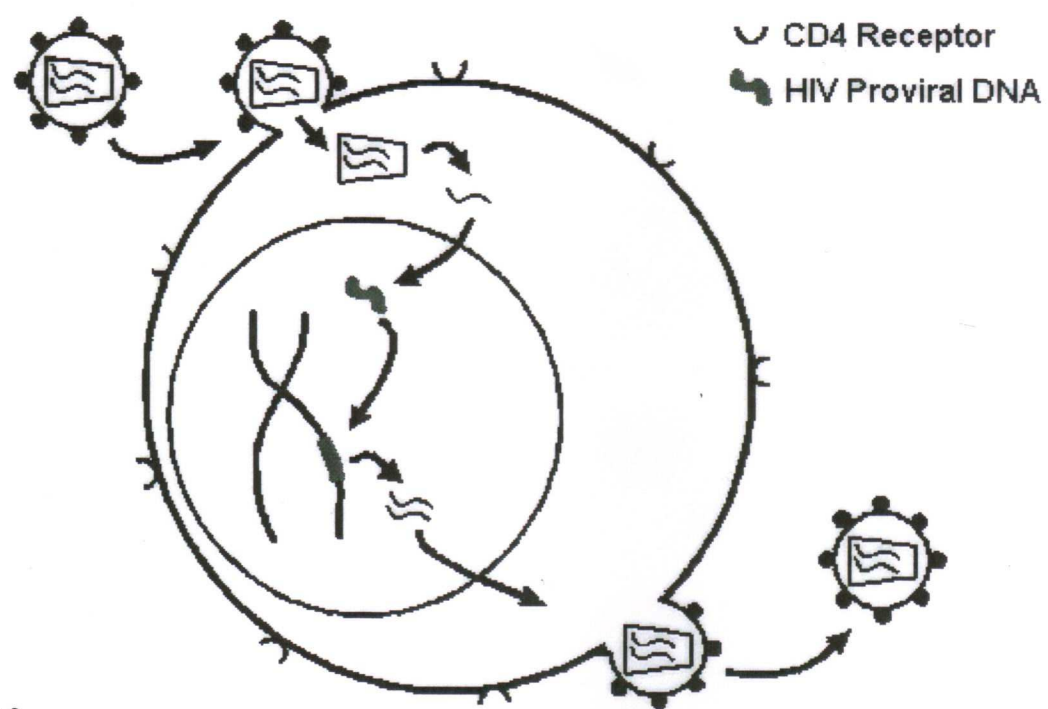
Budding
VIRION

VIRION

CELL



1.3 A human immunodeficiency viral particle is seen budding from the infected cell surface at the top, with a complete viral particle at bottom in this high magnification electron micrograph.



1.4 The life cycle of human immunodeficiency virus is diagrammed here. Note that the reverse transcriptase enzyme makes an HIV proviral DNA that is incorporated into the host cell.